



Beta-tubulin Antibody

E1C601

Catalog Number: E1C601-1, E1C601-2

Amount: 50µg/50µl, 100µg/100µl

Form of Antibody: Mouse Monoclonal (IgG1)

1mg/ml in PBS, pH 7.4 with 0.05% sodium azide. Frozen liquid.

Clone A10

Storage/Stability: Stable for 1 year at -20°C from date of shipment. For maximum recovery of product, centrifuge the original vial after thawing and prior to opening the cap. Aliquot to avoid repeated freezing and thawing. Aliquot will be stable at 4°C for 3 months.

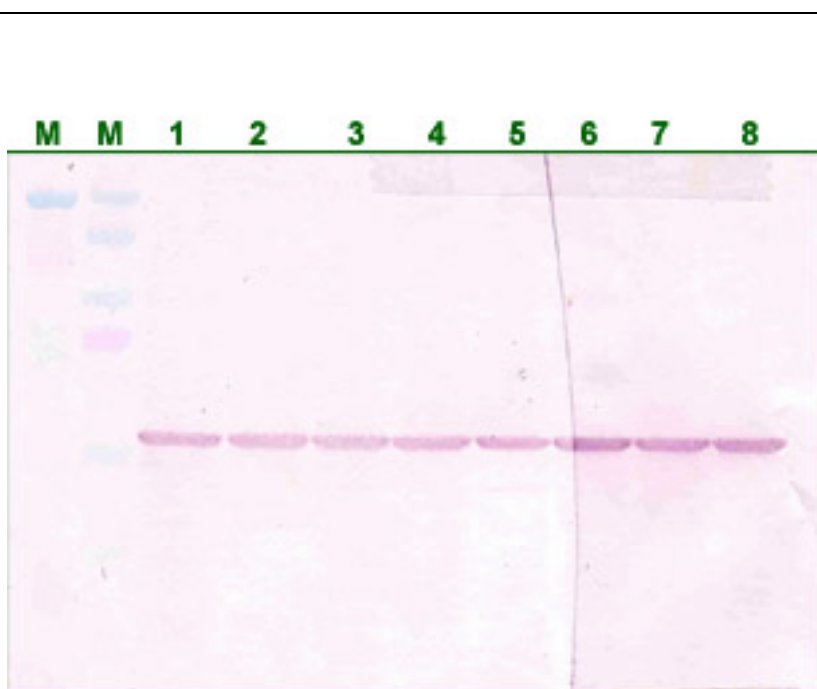
Immunogen: Recombinant beta-tubulin protein from bacteria.

Specificity/Sensitivity: Recognize beta-tubulin from Human, Mouse, Tetrahymena, dictyostelium, Saccharomyces.

Reactivity: Human, Mouse, Rat, others

Applications: Optimal working dilutions should be determined experimentally by the investigator. Prepare working dilution immediately before use. Suggested starting dilutions are as follows: Western blot at dilution of 1:1000-4000 Immunofluorescence staining at 1:100-400 dilutions. It is very useful as a loading control for quantitative western blotting. The antibody recognizes a 50kDa band in a Western Blot analysis.

References: Gupta KK, et al. (2006) FEBS J; 273(23):5320-5332.



Western Blot Analysis of 293 cell lysates with mouse monoclonal anti-beta-tubulin antibody (lane 1-8).

For Research Use Only